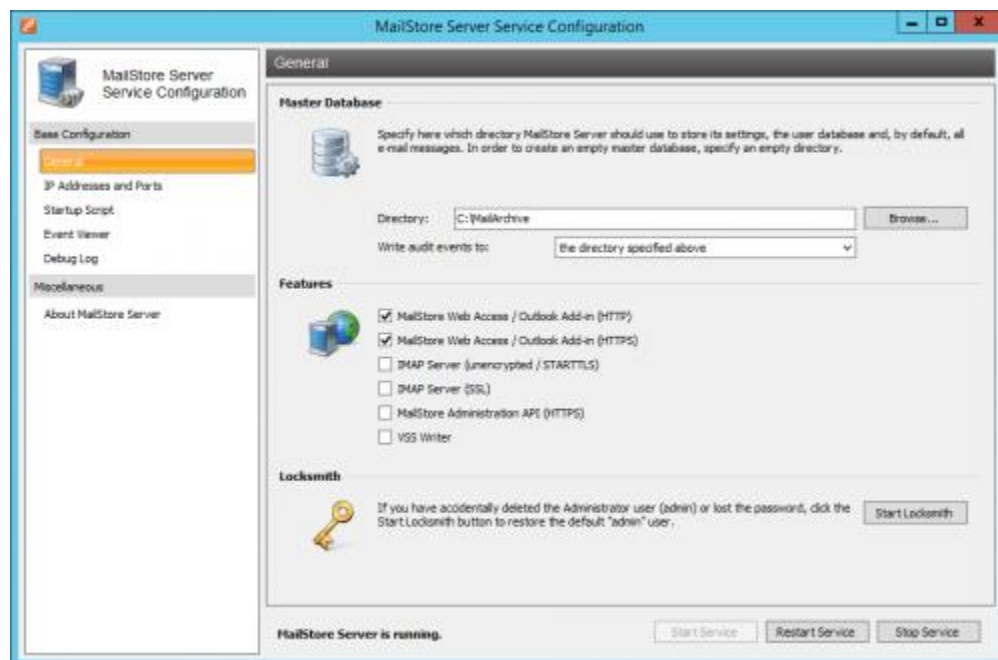


MailStore Server Service Configuration

Basic administrative features are available through the MailStore Server Service Configuration. It can be accessed through the MailStore Server application folder in the Windows Start menu or the corresponding desktop shortcut.



At the bottom of the window, the current status of the MailStore Server service is shown. The service can be controlled using the *Start Service*, *Restart Service* and *Stop Service* buttons. This may be necessary after certain changes to the configuration have been made or before performing backups, for example.

General

Master Database

Select the storage location of an existing master database. When choosing an empty directory, a new master database is created therein. Should an existing archive be moved to a new storage location, refer to the instruction in [Moving the Archive](#).

Also the destination for logging audit events can be specified here.

Features

Individual components for accessing the MailStore server can be activated or deactivated. These include:

- MailStore Web Access / Outlook Add-In (HTTP)
- MailStore Web Access / Outlook Add-In (HTTPS)
- IMAP Server (unencrypted / STARTTLS)
- IMAP Server (SSL)
- MailStore Administrations API (HTTPS)

These components can be configured under *IP Addresses and Ports*.

Locksmith

Use this feature to restore the user "admin" with the password "admin". The MailStore Server service has to be stopped.

IP Addresses and Ports

In addition to activating or deactivating individual components, you can choose the IP address and the port to which a component is to be linked as well as the SSL certificate that is to be used for encrypted connections.

IP Address

IP address at which the component receives connections. Generally, it is advisable to link all MailStore components to all IP addresses (Standard).

Port

Indicates the TCP port at which the component receives connections.

Example: If no web server other than MailStore Web Access is installed (e.g. an IIS website, Microsoft Outlook Web Access or SharePoint), the HTTP- and HTTPS standard ports (80 and 443) can be specified. This way, users can access MailStore Web access directly using the URLs `http://<servername>` or `https://<servername>`.

Server Certificate

Shows the current SSL certificate for the respective component of the MailStore server. To view details about the SSL certificate, click on its name. Using the button next to the name you can:

- Select an SSL certificate from the certificate store of the MailStore Server computer.
- Create a new self-signed SSL certificate.

- Import an SSL certificate from a file directly into the certificate store of the MailStore Server computer.

Startup Script

The MailStore Server service can execute a script before startup. The script can be used to establish a connection to a network resource using special connection parameters as described in chapter [Using Network Attached Storage \(NAS\)](#).

Event Viewer

Events such as starting or stopping the MailStore Server service are displayed here. If there are any errors, click on the corresponding entry to view additional details below the list.

Debug Log

The *Debug Protocol* item provides direct access to all debug logs created by MailStore, activating or deactivating such logs as well as deletion of single log files.

Enable Debug Log

Activate this feature if any problems or errors have occurred while running MailStore Server. After restarting the server service via *Restart Service* in the same window, a detailed log file is taken down. This file can be evaluated by the MailStore support team, for example.

Enable IMAP Connection Debug Log

Activate this feature if problems or errors have occurred while accessing MailStore Server using the integrated IMAP server. After restarting the server service via *Restart Service* in the same window, a detailed log file is taken down. This file can be evaluated by the MailStore support team, for example.

The table shows an overview of all debug log files. To view the contents of a debug log file in a text editor, double-click on the file name or click on *Open*. To delete a debug log file, highlight the file name and click on *Delete*.