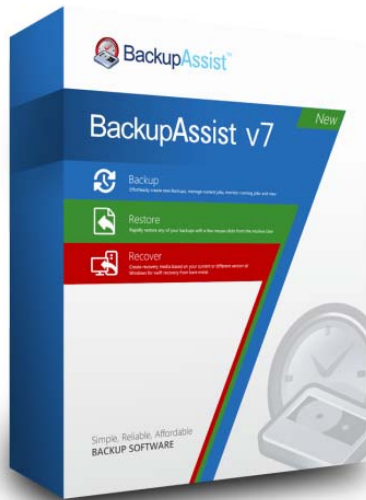


# How To: Configure a Backup User Identity



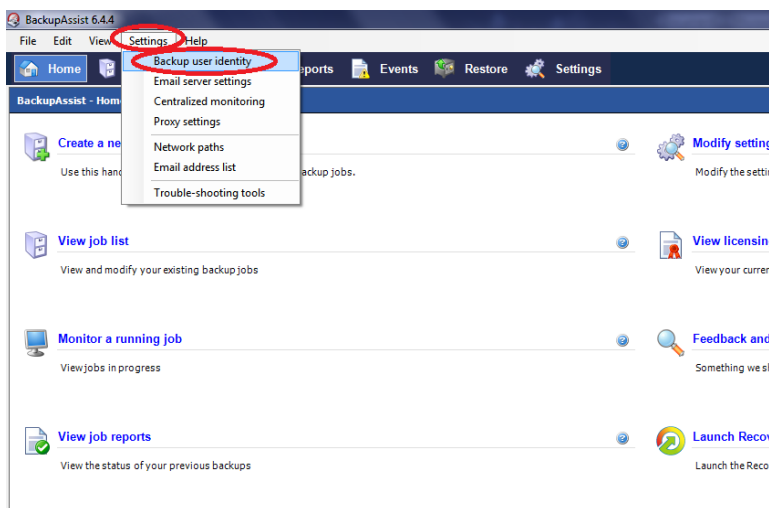
When creating a backup job that uses a network share or a NAS drive as the destination, it's important to remember to create a Backup User Identity. Doing so will ensure BackupAssist connects to the remote system as an existing local user to prevent permission errors.

Before configuring BackupAssist to use a Backup User Identity, you will need to create a user account in Windows for this purpose on the machine running BackupAssist, as well as the remote machine where data will be stored on. When creating this user account you'll want to ensure the username and password are identical on both computers. When completed, you can open BackupAssist and configure the Backup User Identity.

To configure a Backup User Identity in BackupAssist, complete the following:

Open BackupAssist

Click 'Settings' from the top menu options and choose 'Backup User Identity'



Enable the setting 'Provide a backup user identity (recommended)'

Type the username and password previously created for this purpose

Click 'OK' to save your changes (this will prompt a verification window)

**BackupAssist - Settings**

backupassist.com  
BackupAssist

Enter a name and password for your backup user.

**Provide a backup user identity (recommended)**

The Backup processes will run as if this user is logged in and performing the backup manually.  
Make sure that the user entered here has access to all the files and directories you want to back up. If you're backing up to tape, make sure this user is part of the Backup Operator group.

Username: backup

Password: ●●●●●●●●  
This password should never expire.

Domain: [Dropdown]

Run user manager...

Use your local system login

If this setting is selected BackupAssist may not be able to access network resources

OK Cancel

Click 'OK' to save your changes

If you have any questions or need assistance please email [support@ccsoftware.ca](mailto:support@ccsoftware.ca)