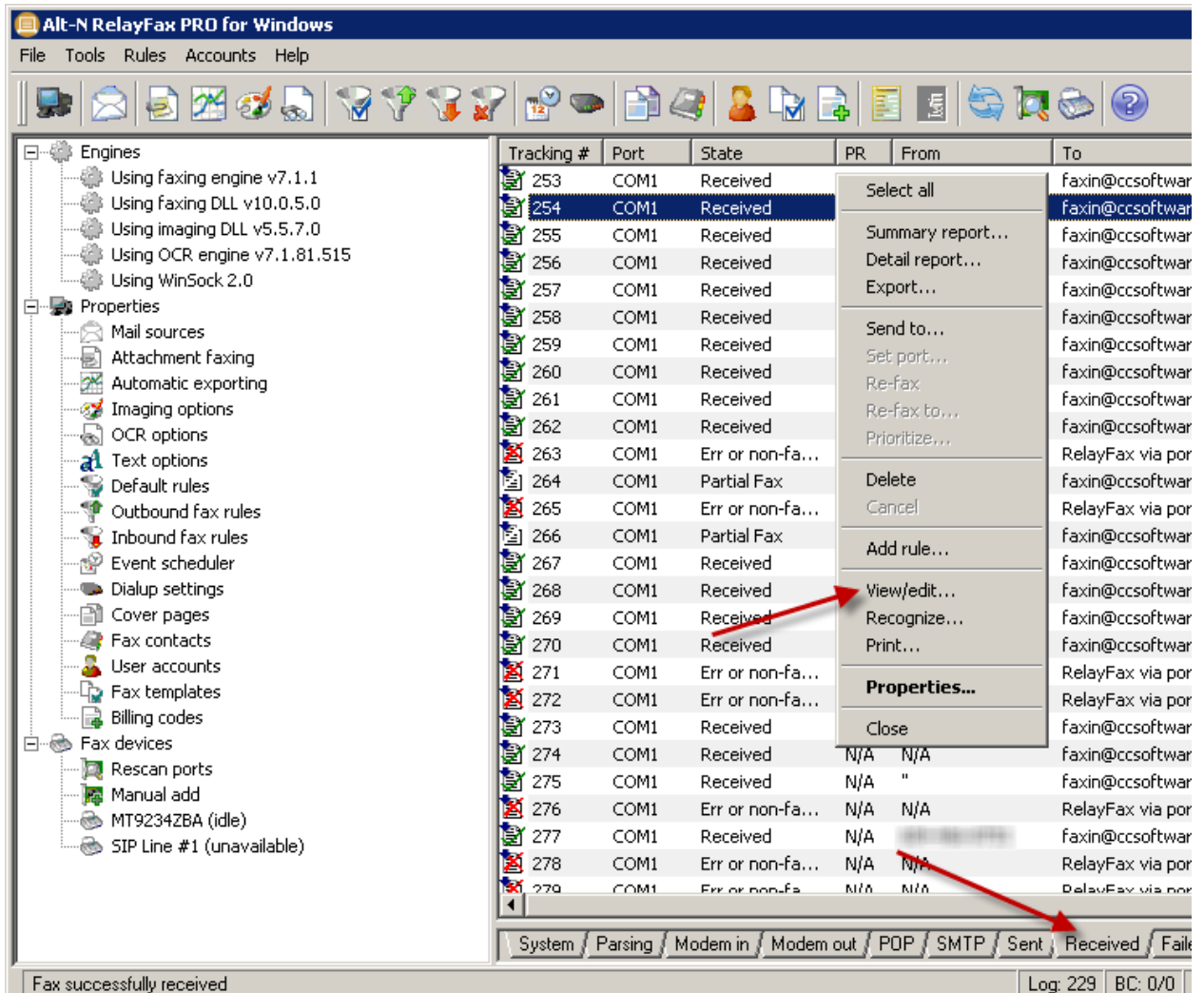




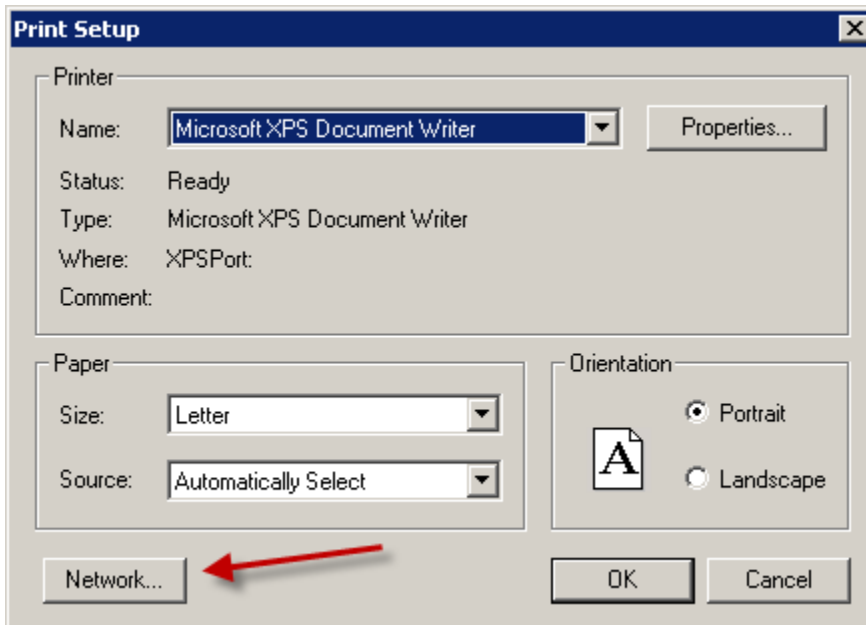
## RelayFax Does Not See A Network Printer As An Available Printer

If you have a network printer you would like to print faxes to, but the printer is not shown as an available option, the below steps will help resolve the problem.

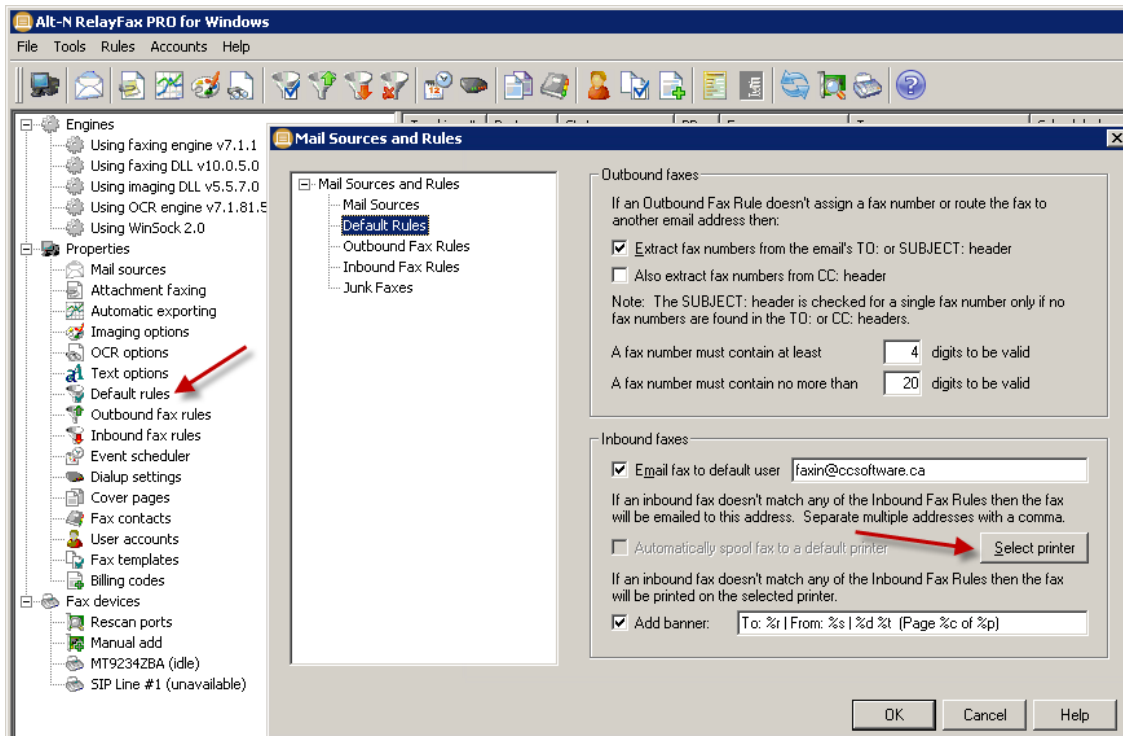
1. Open the RelayFax GUI and select the Received tab at the bottom.
2. Select any fax and right click on it. Select “View/edit” from the context menu.



- The fax will now open in the RelayFax Fax Viewer. Click File | Print Setup in the RelayFax Fax Viewer.
- Click the Network button in the bottom left hand corner which should let you choose any network printer.



- After selecting your printer you can go back to the RelayFax GUI and double click “Default Rules” on the left hand side. Click the Select Printer button and your network printer should now show as an option to be chosen.



\*\*\*NOTE: if you are running RelayFax as a service, which by default runs under the Local System account, you may need to fill out RelayFax’s “Network resource access” options. Any time the RelayFax server needs to access a resource that is not local the credentials you provide here will be used instead.

