

---

# Synchronizing User Accounts with an IceWarp Server

In addition to adding users manually as described in chapter [User Management](#), MailStore Server can synchronize its internal user database with the IceWarp Server of your company.

During synchronization user information such as user names and email addresses are read from the IceWarp Server and recorded in MailStore Server's user database. No changes are made to the IceWarp Server itself by MailStore Server. The scope of the synchronization can be limited through filters.

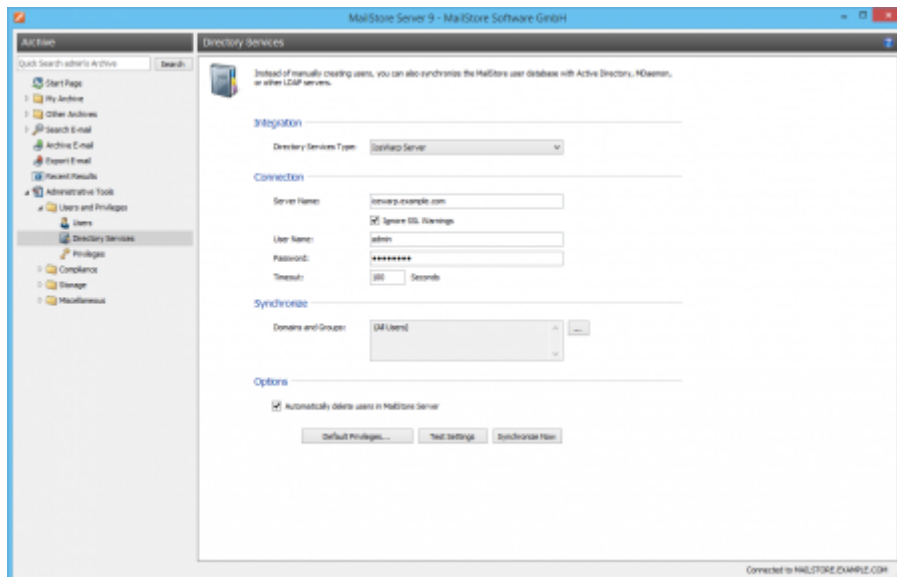
*Please note:* For using this feature, IceWarp Server API 10.4 or newer is required.

## Contents

- [1 Accessing the Directory Service Integration](#)
- [2 Connection to the IceWarp Server](#)
  - [2.1 Synchronize](#)
  - [2.2 Options](#)
- [3 Assigning Default Privileges](#)
- [4 Running Directory Services Synchronization](#)
- [5 Login with IceWarp Server Credentials](#)
  - [5.1 Procedure for Users Created by Synchronization with IceWarp Server](#)
  - [5.2 Procedure for Manually Created Users](#)

## Accessing the Directory Service Integration

- Log on to MailStore Client as a MailStore Server administrator.
- Click on *Administrative Tools > Users and Privileges* and then on *Directory Services*.
- In the *Integration* section, change the directory service type to *IceWarp Server*.



## Connection to the IceWarp Server

For synchronization MailStore Server requires information on how to connect to the IceWarp Server.

- **Server Name**  
DNS name or IP address of the IceWarp server. If you use a self-signed or non-public SSL certificate on the IceWarp server, please set a checkmark next to *Ignore SSL Security Warnings*.
- **User Name**  
Name of a user with administrative privileges on the IceWarp server.
- **Password**  
Password of that user.
- **Timeout**  
The timeout value for IceWarp API requests. For large IceWarp Server user databases it may be necessary to increase this value.

## Synchronize

After configuring the connection settings as described above, you can specify filter criteria for the IceWarp Server user database synchronization in this section.

- **Domains and Groups**  
Choose one or more domains or groups to let only their members be created as MailStore Server Users. If no domains or groups are selected, all users will be synchronized.

## Options

- **Automatically delete users in MailStore Server**

Here you can choose whether users whose accounts have been deleted in the IceWarp Server will also be deleted in MailStore Server's user database by the synchronization. If the archive folder of such a user already contains archived emails, only the user entry but not its archive folder will be deleted in MailStore Server. Additionally, only MailStore Server users that have their authentication method set to *Directory Services* will be deleted.

## Assigning Default Privileges

By default, users that have been synchronized to MailStore Server from an IceWarp Server have the privilege to log on to MailStore Server as well as read access to their own user archive.

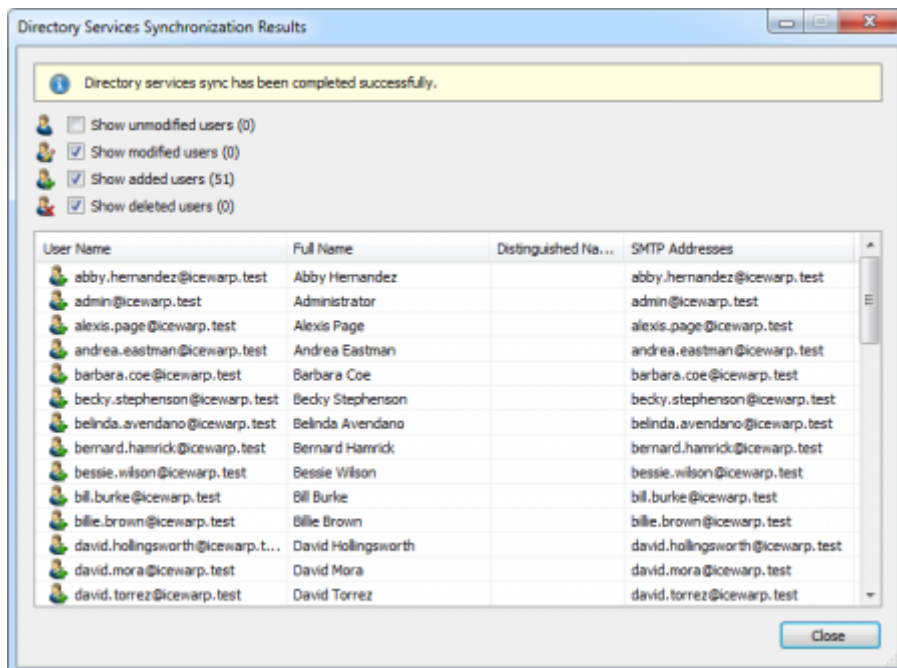
You can configure those default privileges before synchronization, for example, to assign the privilege *Archive E-mail* to all new users. To do this, click on *Default Privileges...*

More information on managing user privileges and their effects is available in the chapter [Users, Folders and Settings](#) which also has details on editing existing privileges.

## Running Directory Services Synchronization

Click on *Test Settings* to check synchronization configuration and the results returned by the IceWarp Server without any changes to the MailStore Server user database being actually committed.

To finally run the synchronization, click on *Synchronize now*. The results are shown with any changes committed to the MailStore Server user database.



## Login with IceWarp Server Credentials

By default, each user created in MailStore Server has a local password. The MailStore Server administrator can specify this password during creation of a new user account. The respective user can later change this password in MailStore Client's *Quick Access* section if he or she has ample privileges.

Alternatively, if an IceWarp Server is available, you can configure MailStore Server to allow users to log on to MailStore Server using their IceWarp Server credentials.

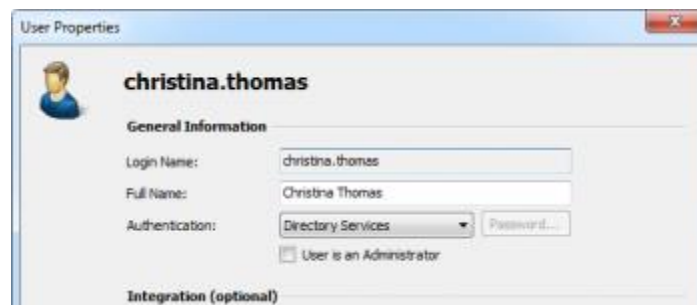
### Procedure for Users Created by Synchronization with IceWarp Server

If you have created MailStore Server users by IceWarp Server synchronization as described in the previous section, no further action is required. In this case, MailStore Server has already configured all necessary settings automatically for you. Users can log on to MailStore Server via *Standard Authentication* by using their IceWarp Server username and IceWarp Server password.

### Procedure for Manually Created Users

If you have created MailStore Server users manually and want them to be able to log on using their IceWarp Server credentials, please proceed as follows after you have configured the IceWarp Server integration as described above.

- Verify that the names of the MailStore Server users match those of the corresponding IceWarp Server users.
- In the *General Information* section of the user properties select *Directory Services* for *Authentication*.



Users can now log on to MailStore Server via *Standard Authentication* by using their IceWarp Server username and IceWarp Server password.