

Synchronizing User Accounts with Google Apps

In addition to adding users manually as described in chapter [User Management](#), MailStore Server can synchronize its internal user database with the Google Apps account of your company.

During synchronization user information such as user names and email addresses are read from the Google Apps account and recorded in MailStore Server's user database. No changes are made to the Google Apps account itself by MailStore Server. The scope of the synchronization can be limited through filters.

Contents

- [1 Prepare the Google Apps account](#)
 - [1.1 Creating a Project](#)
 - [1.2 Grant access to the required APIs](#)
- [2 Accessing Directory Service Integration](#)
- [3 Connection to Google Apps](#)
 - [3.1 User Database Synchronization](#)
 - [3.2 Options](#)
- [4 Assigning Default Privileges](#)
- [5 Running Directory Services Synchronization](#)
- [6 Login with Google Apps Account Credentials](#)
 - [6.1 Procedure for Users Created by Synchronization with Google Apps Account](#)
 - [6.2 Procedure for Manually Created Users](#)

Prepare the Google Apps account

In order to synchronize accounts information from Google Apps, MailStore Server requires a service account which has been granted permission to access the Google Apps account. This same service account is later used for archiving email from Google Apps.

Creating a Project

Before MailStore is able to connect to Google Apps accounts a project has to be created. In Google's terminology, a project is the collection of all settings, credentials and meta data of an application that uses Google Developer APIs or Google Cloud resources.

- Go to the [Google Developers Console](#).
- If prompted, login using a Google Account with administrative rights.
- Click *Create project*.

- Name the project e.g. *MailStore API Access*.
- Click *Create*.
- In the sidebar on the left, expand *APIs & auth*.
- Next, click *APIs*.
- In the list of APIs, make sure *Admin SDK* and *Gmail API* show a status of *ON*.
- In the sidebar on the left, select *Credentials*.
- Under the *OAuth* heading, select *Create new Client ID*.
- When prompted, select *Service Account* and click *Create Client ID*.
- A dialog box appears. To proceed, click *Okay, got it*.
- Save the P12 file (e.g. *MailStore API Access-e035d2ad4f35.p12*) to an appropriate folder on the MailStore Server. MailStore Server does not require the private key password (i.e. *notasecret*)
- Note the *Client ID* and *Email Address* provided for later use.

Grant access to the required APIs

Once created, grant the project access to the APIs used by MailStore Server's Directory Services module.

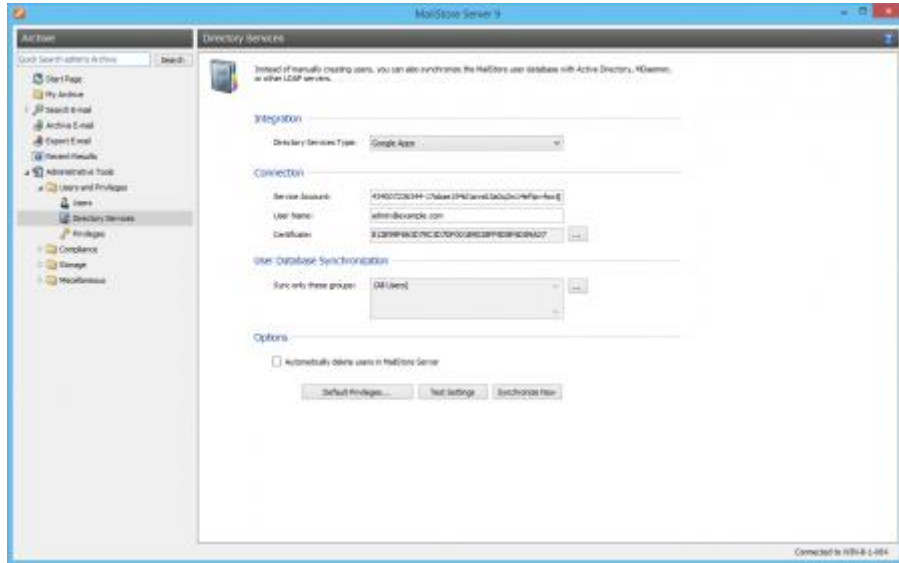
- Go to your Google Apps domain's [Admin console](#).
- Select *Security* from the list of controls. If you don't see *Security* listed, select *More controls* from the gray bar at the bottom of the page, then select *Security* from the list of controls. If you can't see the controls, make sure you're signed in as an administrator for the domain.
- Select *API reference* from the list of options.
- Enable the *API access* and save the changes.
- Select *Advanced settings* from the list of options. If this section is not visible, click on *Show more* first.
- Select *Manage API client access* in the *Authentication* section.
- In the *Client name* field enter the service account's *Client ID* (e.g. *1047453716425-4l533u425bp2m3lfp0c23ntf8mghlbmb.apps.googleusercontent.com*).
- In the *One or More API Scopes* field enter the following scopes:

```
https://mail.google.com/,  
https://www.googleapis.com/auth/admin.directory.group.readonly,  
https://www.googleapis.com/auth/admin.directory.user.readonly
```

- Click *Authorize*.

Accessing Directory Service Integration

- Log on to MailStore Client as a MailStore Server administrator.
- Click on *Administrative Tools > Users and Privileges* and then on *Directory Services*.
- In the *Integration* section, change the directory service type to *Google Apps*.



Connection to Google Apps

For synchronization MailStore Server requires information on how to connect to the Google Apps.

- **Service Account**
The *email address* provided by the Google Apps Project (e.g. *1047453716425-4l533u425bp2m3lfp0c23ntf8mghlbmb@developer.gserviceaccount.com*).
- **User Name**
The *email address* of a Google Apps Administrator (e.g. *admin@example.com*).
- **Certificate**
To import, select the *P12* file which was provided for downloading when creating the project.

User Database Synchronization

After configuring the connection settings as described above, you can specify filter criteria for the Google Apps synchronization in this section.

- **Sync only these groups**
Choose one or several Google Apps groups if you only want their members to be created as MailStore Server users. That way it's possible to exclude certain users from being synchronized to MailStore Server.

Options

- **Automatically delete users in MailStore Server**
Here you can choose whether users whose accounts have been deleted in the Google Apps Account

will also be deleted in MailStore Server's user database by the synchronization. If the archive folder of such a user already contains archived emails, only the user entry but not its archive folder will be deleted in MailStore Server. Additionally, only MailStore Server users that have their authentication method set to *Directory Services* will be deleted.

Assigning Default Privileges

By default, users that have been synchronized to MailStore Server from Google Apps Account have the privilege to log on to MailStore Server as well as read access to their own user archive.

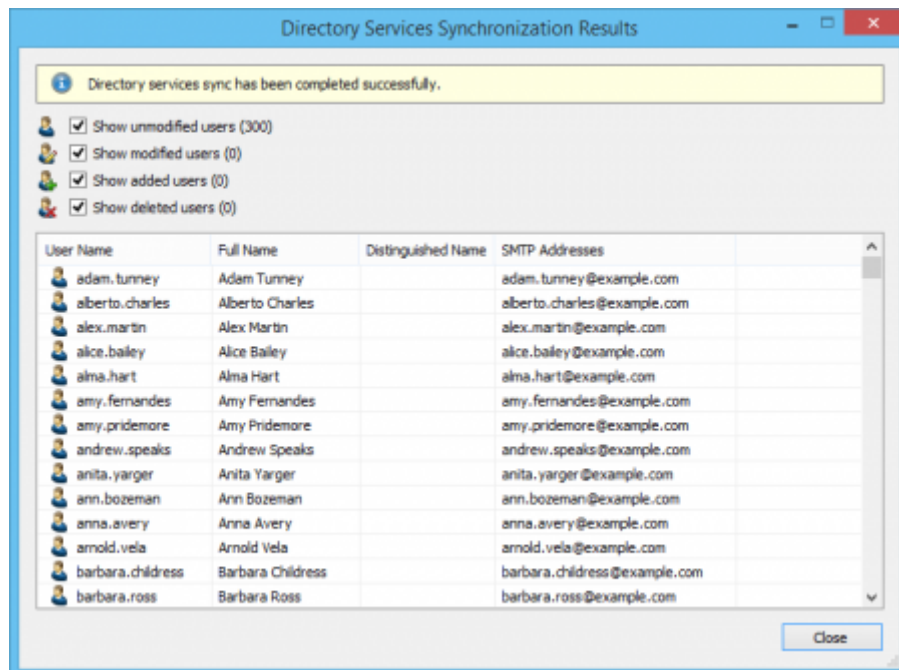
You can configure those default privileges before synchronization, for example, to assign the privilege *Archive E-mail* to all new users. To do this, click on *Default Privileges...*

More information on managing user privileges and their effects is available in the chapter [Users, Folders and Settings](#) which also has details on editing existing privileges.

Running Directory Services Synchronization

Click on *Test Settings* to check synchronization configuration and the results returned by the Google Apps Account without any changes to the MailStore Server user database being actually committed.

To finally run the synchronization, click on *Synchronize now*. The results are shown with any changes committed to the MailStore Server user database.



Login with Google Apps Account Credentials

By default, each user created in MailStore Server has a local password. The MailStore Server administrator can specify this password during creation of a new user account. The respective user can later change this password in MailStore Client's *Quick Access* section if he or she has ample privileges.

Alternatively, if a Google Apps Account is available, you can configure MailStore Server to allow users to log on to MailStore Server using their Google Apps Account credentials.

Procedure for Users Created by Synchronization with Google Apps Account

If you have created MailStore Server users by Google Apps Account synchronization as described in the previous section, no further action is required. In this case, MailStore Server has already configured all necessary settings automatically for you. Users can log on to MailStore Server via *Standard Authentication* by using their Google Apps Account username and Google Apps Account password.

Procedure for Manually Created Users

If you have created MailStore Server users manually and want them to be able to log on using their Google Apps Account credentials, please proceed as follows after you have configured the Google Apps Account integration as described above.

- Verify that the names of the MailStore Server users match those of the corresponding Google Apps Account users.
- In the *General Information* section of the user properties select *Directory Services* for *Authentication*.



Users can now log on to MailStore Server via *Standard Authentication* by using their Google Apps Account username and Google Apps Account password.