

## Migrating User Accounts - Serv-U® to Cerberus FTP Server®

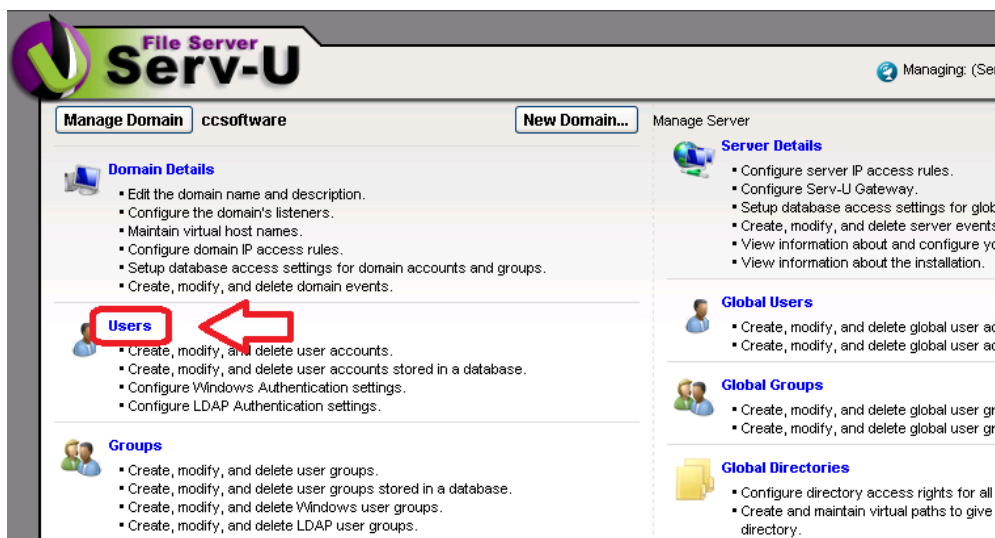


Cerberus FTP Server has an integrated migration tool which allows you to import settings from your Serv-U installation over to Cerberus FTP Server. The following settings can be migrated:

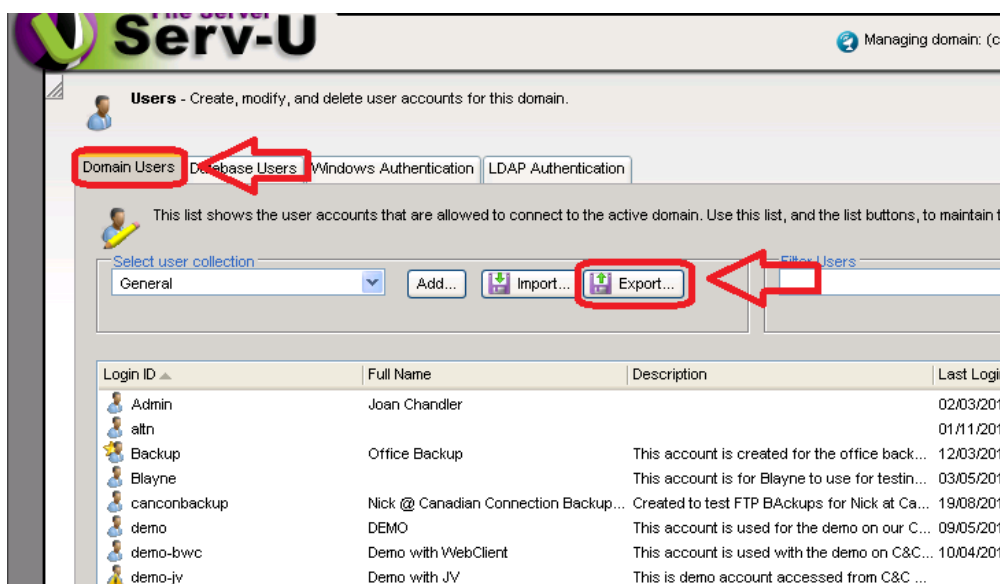
- User Name
- Password
- Email Address
- Description
- Home Directory
- Directory Permissions
- Group Membership
- Enable or Disable Account
- Toggle FTP, FTPS, SSH SFTP, HTTP, HTTPS access
- IP Access Rules
- Require Secure Control
- Require Secure Data
- Limit Simultaneous Logins

## Part One: Exporting User Accounts from Serv-U

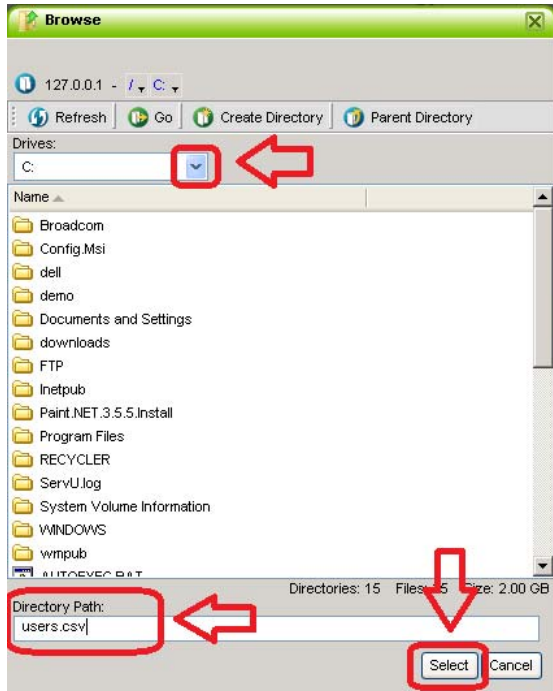
- Open Serv-U and click 'Users'



- Click the 'Domain Users' tab at the top of the window
- Click the 'Export' button



- Choose a directory path and type a file name in the bottom text box ('users.csv' for example)
- Click the 'Select' Button



- Click the 'Yes' button

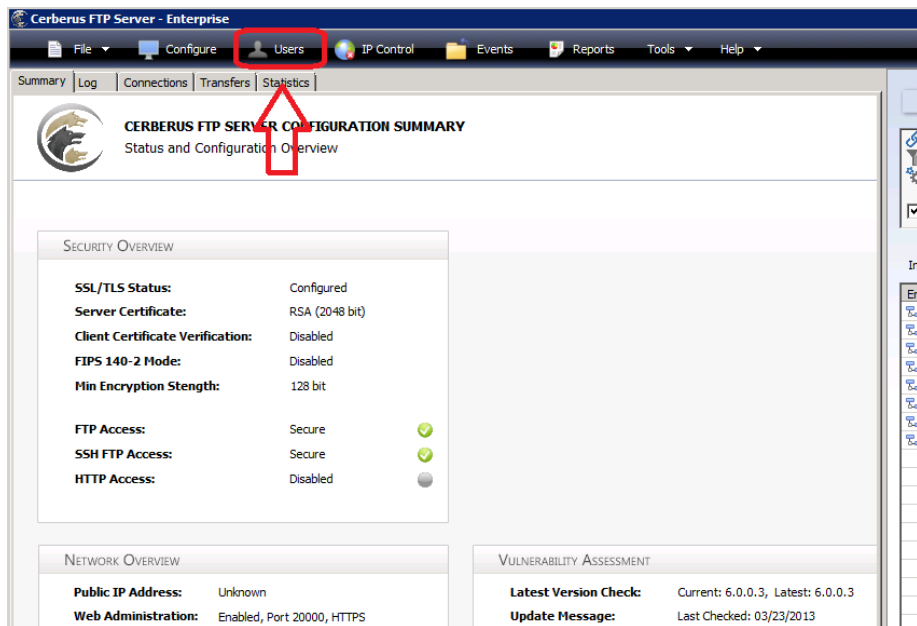


- Click the 'OK' button

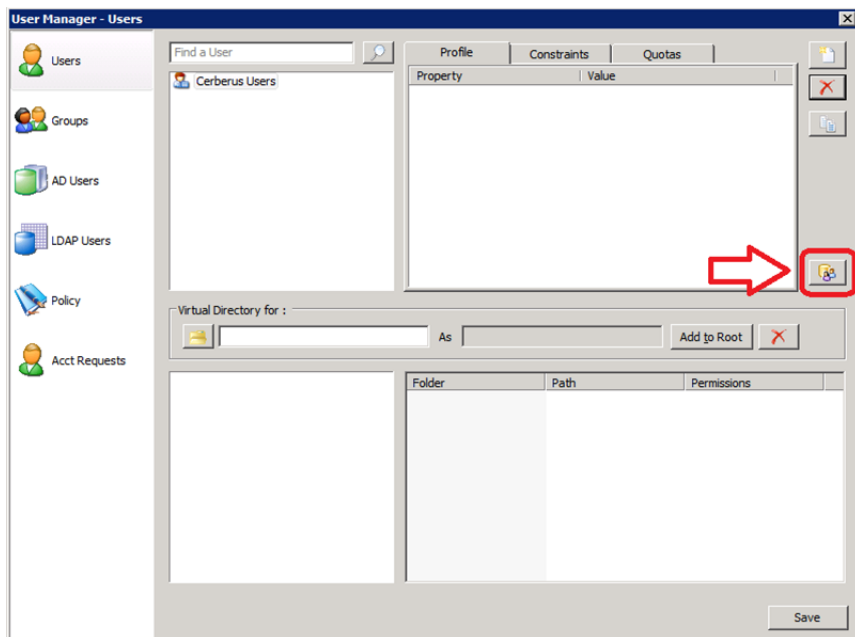


## Part Two: Importing the User Accounts into Cerberus

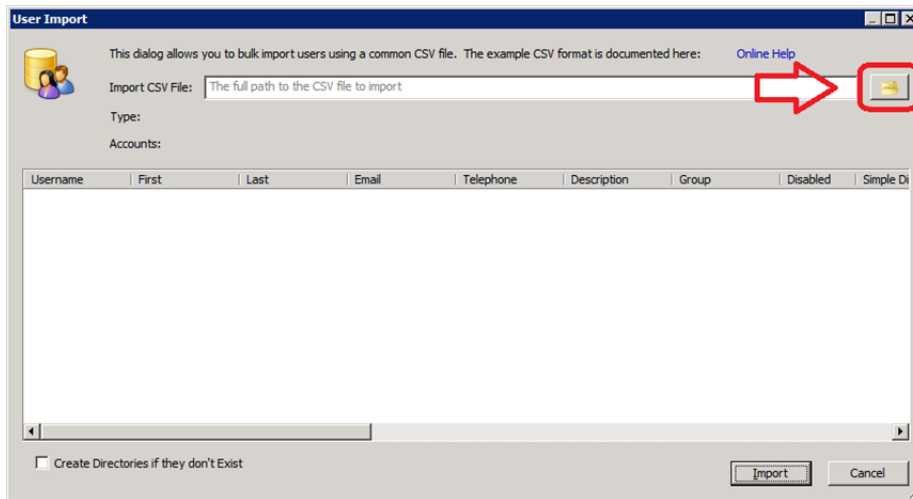
- Open Cerberus and click 'Users' at the top of the window



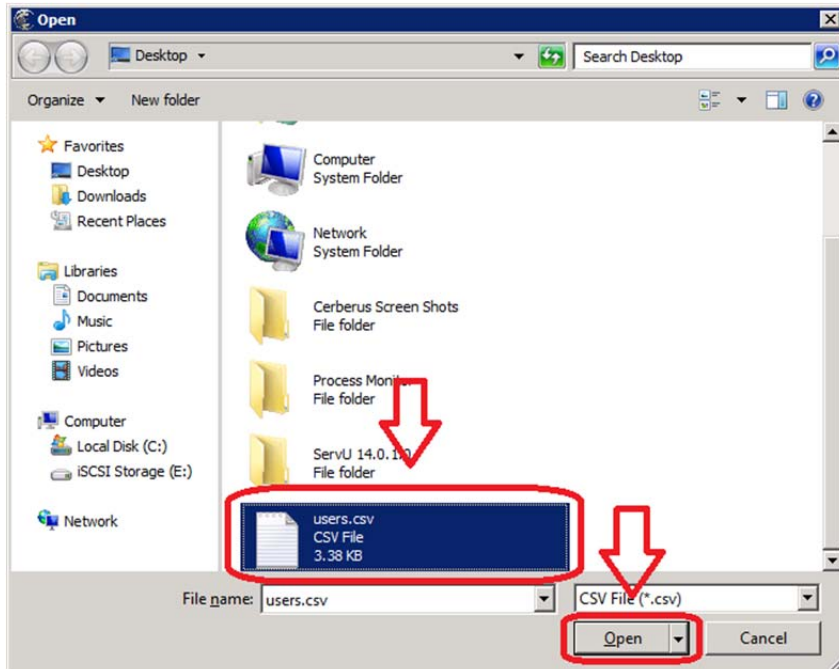
- Click the 'Import' button on the right portion of the window



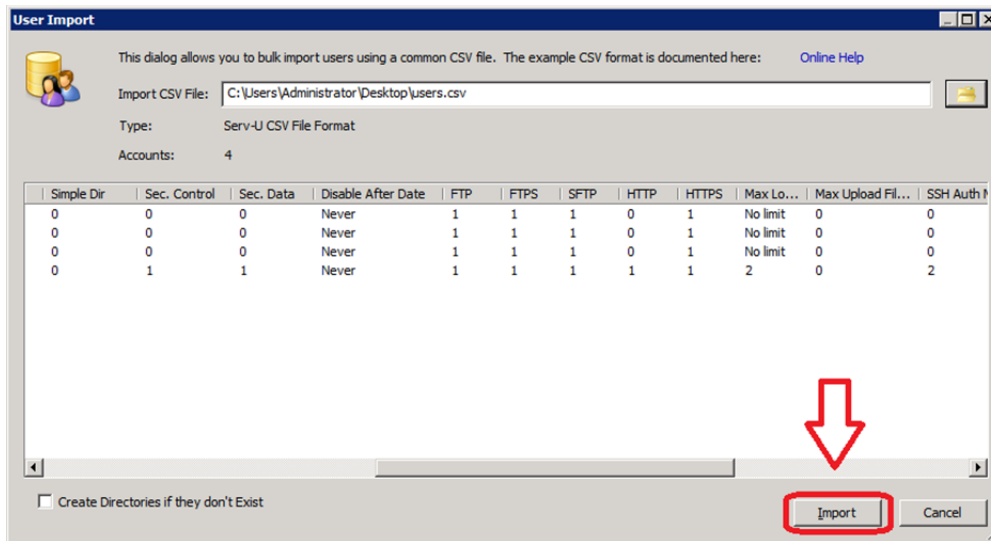
- Click the 'Browse' button on the top right portion of the window



- Find and select your file and click 'Open'



- Click the 'Import' button to complete the process



If you have any questions or need support with your migration please email [support@ccsoftware.ca](mailto:support@ccsoftware.ca). We're always happy to help!