

# BackupAssist™ v8

## MultiSite Manager

### Setup Guide



# Contents

<b>1. Introduction .....</b>	<b>2</b>
How MultiSite Manager works.....	2
How MultiSite Manager is implemented .....	2
<b>2. MultiSite Manager requirements .....</b>	<b>3</b>
Operating System requirements .....	3
License and version requirements .....	3
Technical requirements.....	3
Remote session requirements.....	3
Supported web browsers .....	3
<b>3. MultiSite Manager implementation.....</b>	<b>4</b>
Implementation overview .....	4
Implementation walkthrough.....	4
<b>4. MultiSite Manager installation.....</b>	<b>5</b>
<b>5. MultiSite Manager setup .....</b>	<b>6</b>
<b>6. Firewall and router configuration .....</b>	<b>7</b>
Firewall.....	7
Router.....	7
<b>7. BackupAssist remote setup.....</b>	<b>8</b>
For a Site Controller.....	9
For a Regular BackupAssist computer .....	9
<b>8. The MultiSite Manager UI.....</b>	<b>10</b>
Opening MultiSite Manager.....	10
Navigating MultiSite Manager .....	10

# 1. Introduction

BackupAssist MultiSite Manager is a standalone software solution that allows you to remotely administer BackupAssist v8 and later computers over the internet.

## How MultiSite Manager works

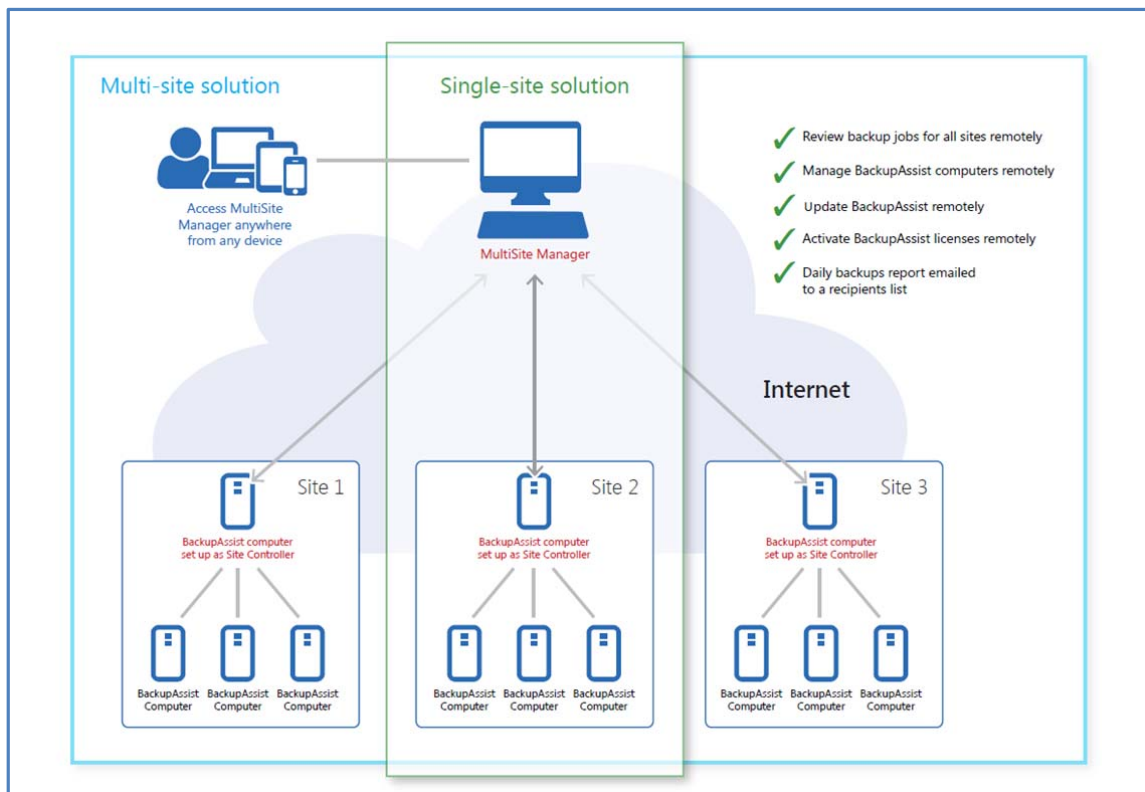
BackupAssist MultiSite Manager is installed onto the computer that will manage your BackupAssist computers. This computer will be the MultiSite Manager, and you will interface with it using a web UI.

All of the computers to be managed by the MultiSite Manager are grouped into sites. One computer in each site is made a Site Controller, which connects to the MultiSite Manager and communicates on behalf of its site. All other BackupAssist computers in the site are added to the Site Controller.

## How MultiSite Manager is implemented

MultiSite Manager can be used for both single-site and multi-site implementations.

- **Single-site:** each BackupAssist computer is connected to a single Site Controller, and that Site Controller is connected to the MultiSite Manager.
- **Multiple Sites:** each BackupAssist computer is connected to the Site Controller for their site. The Site Controllers are all connected to the MultiSite Manager.



**Figure 1: Single-site and multi-site implementations**

Figure 1 shows how a single-site solution is implemented—in the same way as a multi-site solution, but with just one site to manage. The *Site Controller* computer can also run *MultiSite Manager* if required.

## 2. MultiSite Manager requirements

---

Please review these prerequisites before deploying the MultiSite Manager.

### Operating System requirements

MultiSite Manager can be installed onto the following operating systems.

- Windows Server 2008 R1/R2 64bit
- Windows Server 2012 R1/R2 64bit
- Windows 7 32bit/64bit
- Windows 8/8.1 64bit

### License and version requirements

- The MultiSite Manager's computer requires an active MultiSite Manager license subscription.
- A Site Controller needs BackupAssist v8 and a valid BackupCare or Upgrade Protection subscription.
- A BackupAssist computer (managed by MultiSite Manager) needs BackupAssist v8 and a valid BackupCare or Upgrade Protection subscription.

To learn more about licensing, see our MultiSite Manager [licensing resource page](#).

### Technical requirements

- The MultiSite Manager's computer requires a globally reachable hostname or IP address.
- MultiSite Manager communication over the internet should be secured using [SSL Certificates](#).
- All remotely managed BackupAssist computers and Site Controllers must have internet access.

### Remote session requirements

MultiSite Manager can open a remote BackupAssist installation, and run it as a local session on the computer running the MultiSite Manager UI. This feature uses Microsoft Remote Desktop.

- Microsoft Remote Desktop must be enabled on a computer before MultiSite Manager can connect to it and initiate a remote session.
- BackupAssist will automatically enable Remote Desktop for you, when you select *Enable Remote Management*, in the [Remote Setup screen](#).
- If you use the Remote Session feature to access a Windows 7 or 8 workstation, you will be presented with a full Microsoft Remote Desktop session, which is used to open BackupAssist.

### Supported web browsers

The following web browsers are supported by the MultiSite Manager's web UI:

- Microsoft Internet Explorer 9 and above
- Mozilla Firefox 12.0 and above
- Google Chrome 19.0 and above

## 3. MultiSite Manager implementation

---

### Implementation overview

For a Multisite Manager solution, one computer in each site is nominated as the Site Controller, which will connect to the MultiSite Manager and communicate with the MultiSite Manager on behalf of a site. A site is a LAN containing all of the managed BackupAssist computers.

- MultiSite Manager is [installed](#) and [configured](#) on a computer. It does not require BackupAssist.
- The Site Controller is a BackupAssist computer. It is registered to the MultiSite Manager using the BackupAssist *Remote* tab's [Remote Setup](#) window.
- A BackupAssist Computer is added to the Site Controller, using the [Remote Setup](#) window.

### Implementation walkthrough

This walkthrough explains the sequence of steps that should be followed to implement a MultiSite Manager solution. A detailed description of each step can be found in sections 5 and 7 of this guide.

#### Step 1: Set up a MultiSite Manager computer

- a) Select a computer to be your MultiSite Manager. This computer will need internet access, a globally reachable hostname or IP address and an SSL certificate assigned.

MultiSite Manager can be installed onto a Site Controller, but the Site Controller will still need to be registered to the MultiSite Manager so that the computer can perform both roles.

- b) Install MultiSite Manager onto this computer and run the initial setup when you first launch the MultiSite Manager UI.

#### Step 2: Set up a Site Controller for each site

These steps are performed on one computer in each site - the Site Controller. If there is only one BackupAssist computer in a site, that one computer will be the Site Controller.

- a) Select a BackupAssist computer to be the Site Controller for the site you want to set up.
- b) Install BackupAssist v8.1 or later onto the computer (if it's not already running v8.1 or later).
- c) Run the BackupAssist *Remote* tab > *Remote Setup*. Select the *Site Controller* role and register the site to the MultiSite Manager.

#### Step 3: Add your BackupAssist computers

- a) Run the BackupAssist *Remote* tab > *Remote Setup*
- b) Add the computer to the Site Controller for that computer's site.

Once your BackupAssist MultiSite Manager solution is in place, all remote management can be performed using the MultiSite Manager Web UI. The Web UI can be accessed from a web browser on any other computer that can connect to the Web UI's URL.



All computers managed by MultiSite Manager require BackupCare or Upgrade Protection and are therefore licensed for BackupAssist v8. MultiSite Manager can upgrade existing BackupAssist computers to BackupAssist v8 using the Remote Update feature.

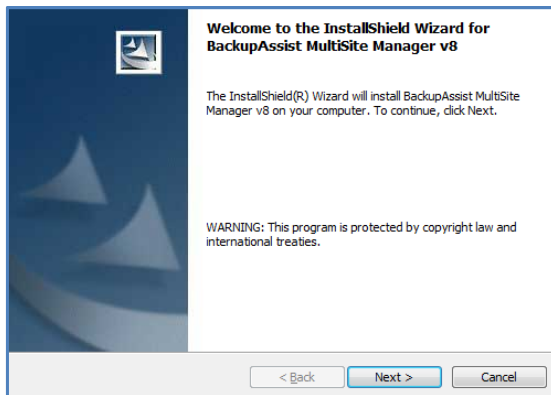
## 4. MultiSite Manager installation

BackupAssist MultiSite Manager is a stand-alone product that is installed onto a computer that will become the MultiSite Manager. BackupAssist does not need to be installed on this computer.

To install MultiSite Manager:

1. Download the install file from the beta download page.
2. When the download begins, select or confirm your download location and download the file.  
Once you have downloaded the install file, the file will run automatically, prompt you to run it or save to the selected destination, depending on your web browser and your web browser's settings.
3. Run or double-click the install file. You may be prompted to confirm that you wish to run this program if your computer has security policies enabled.
4. The installation wizard will start and begin preparing the MultiSite Manager files. Once the files are ready, you will be asked to confirm that you would like to install MultiSite Manager.

Click **Next**



5. The next screen will ask you to read the **MultiSite Manager End User License Agreement**. Once you have read the agreement, if you would like to proceed, select *I accept the terms of the license agreement*.

Click **Next**

6. The next screen will ask you to confirm or change the installation destination. If you would like to install MultiSite Manager on a location different to the one shown, use the **Change** button and browse to the required location and then select OK.

Click **Next**

7. The next screen will give you a chance to go back and modify your selections.

Click **Install**

**MultiSite Manager will now begin to install.**

8. Once MultiSite Manager has been installed, a completion screen will be displayed.

Click **Finish**

Once the install has completed, you can select *Launch MultiSite Manager Web-UI* from your **Start** menu or desktop shortcut.

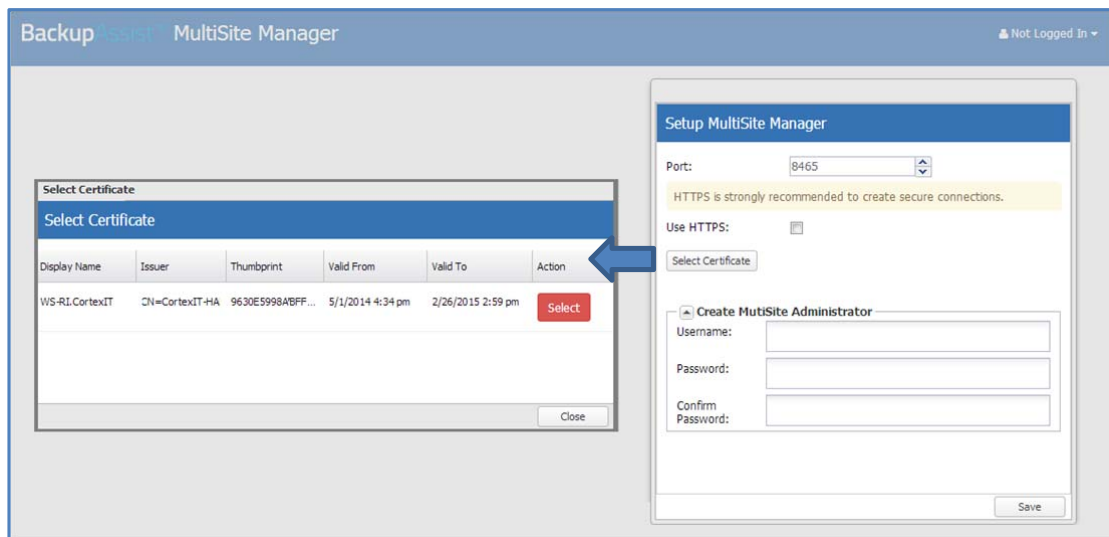
## 5. MultiSite Manager setup

The first time you launch MultiSite Manager, you will be presented with a setup screen to create a Multisite Manager username and password, and an option to enable HTTPS communication.

Follow these steps to review and configure MultiSite Manager's settings:

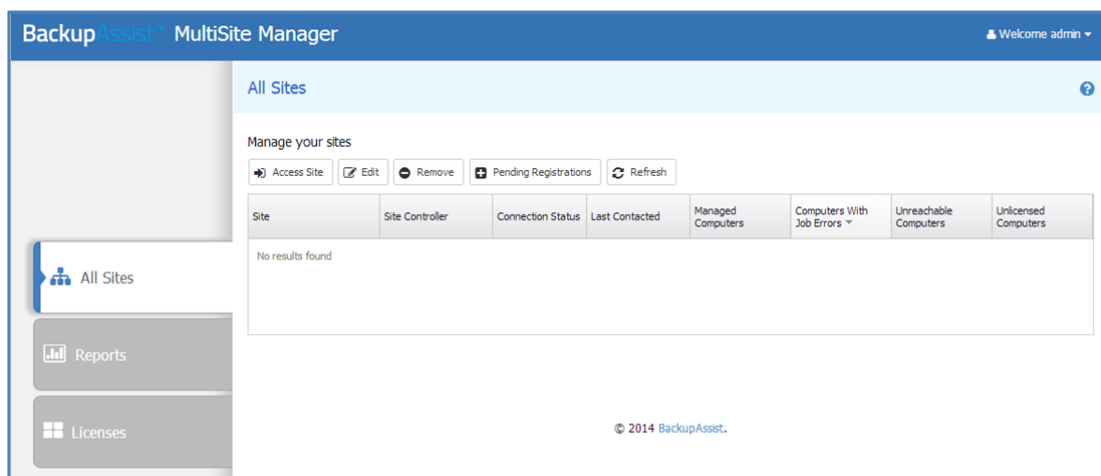
1. The default **Port** setting is 8465. You can change this setting if required.
2. **Use HTTPS** enables a secure connection over the internet between the MultiSite Manager and each Site Controller. If you select *Use HTTPS*, you will also need to select *Use HTTPS* when you register each Site Controller using BackupAssist's Remote tab.

If you select *Use HTTPS*, the **Select Certificate** button will become active. The button will display the SSL certificates available. To learn more, please view our online [SSL certificates resource page](#).



**Figure 2: MultiSite Manager setup and SSL certificate selection**

3. Use the **Create MultiSite Administrator** fields to create a username and password for the MultiSite Manager UI. These credentials are used each time you log in.
4. Select **Save** and the MultiSite Manager UI will open.



**Figure 3: MultiSite Manager - first run UI**

## 6. Firewall and router configuration

To enable communication between the MultiSite Manager and each site over the internet, you need to make the following changes to your MultiSite Manager's firewall and router.



To administer multiple sites, you only need to make changes on the MultiSite Manager's firewall and router/switch. You do not need to make any changes to the firewalls and routers on any of the remote sites.

### Firewall

If an external firewall device is used, then it needs to be configured to allow inbound traffic to the MultiSite Manager on the MultiSite Manager's port (default 8465).

### Router

A port-forwarding rule may need to be in place to ensure that the relevant traffic is passed to your MultiSite Manager.

#### MultiSite Manager firewall and router diagram

The diagram below shows the connections between the MultiSite Manager, each of its Site Controllers and the computers in each site.

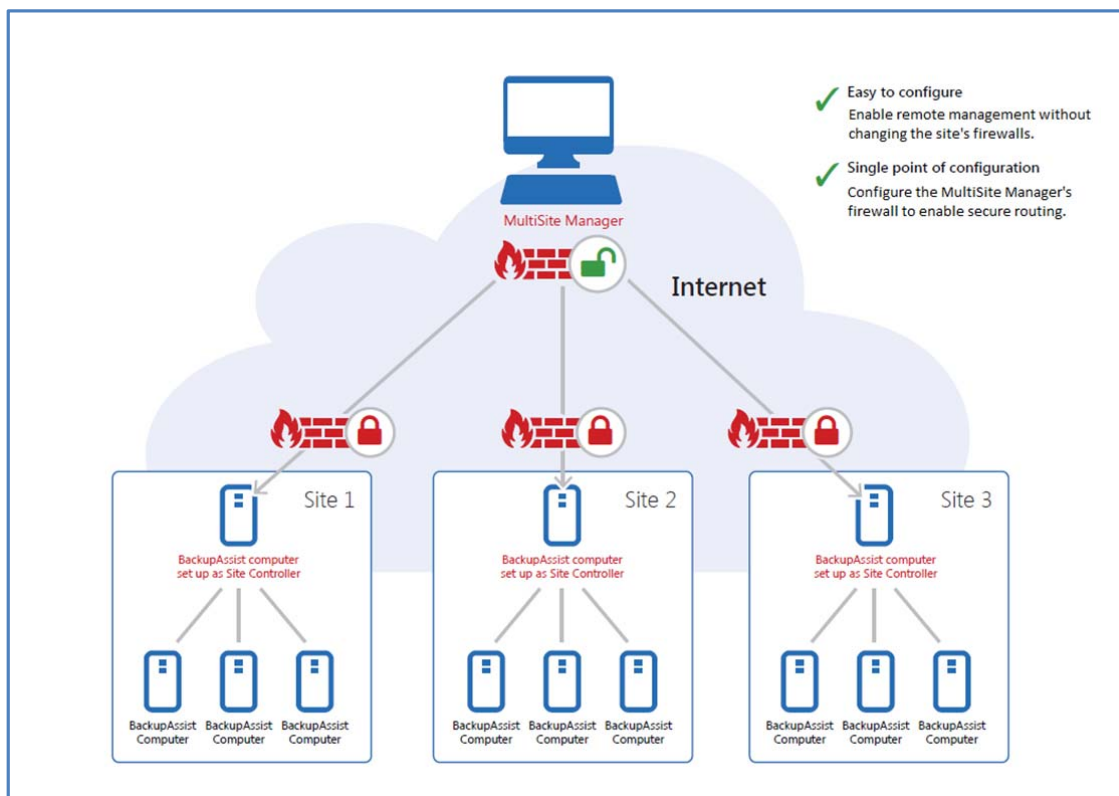


Figure 4: MultiSite Manager firewall and router configurations

Only the MultiSite Manager requires changes to its firewall and router to enable secure connections between the different sites, over the internet.



## 7. BackupAssist remote setup

This section explains how to use BackupAssist's Remote tab to set up a BackupAssist computer so that it can be remotely managed by MultiSite Manager.

The Remote tab is used to:

- Make a BackupAssist computer a Site Controller, and register it to the MultiSite Manager.
- Add a Regular BackupAssist Computer to a Site Controller.

A MultiSite Manager must be set up before a Site Controller can be registered to it. Once a Site Controller has been registered, BackupAssist computers can be added.

To enable remote management:

1. Open BackupAssist's **Remote** tab.
2. Select **Remote Setup**.
3. Tick **Enable Remote Management**.
4. Select **Regular BackupAssist Computer** or **Site Controller** from the *Computer Role* options.

One computer in each site (LAN) must be nominated as a Site Controller. The Site Controller will connect to the MultiSite Manager and communicate with it on behalf of the site.

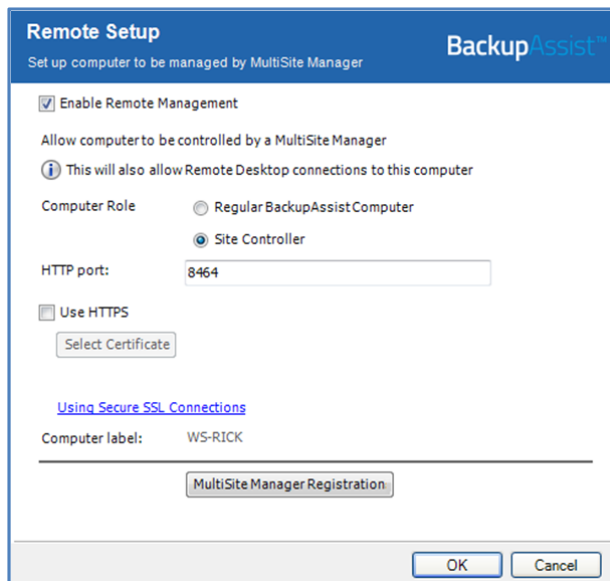


Figure 5: Remote Management Setup

5. The **HTTP port** is set to 8464 by default. This is the port used for communicating with the Regular BackupAssist Computers inside the Site.

The Computer Role selected will determine the remaining Remote Setup options.

- Selecting *Site Controller* will display a *MultiSite Manager Registration* button, and an option to use HTTPS when communicating within the site.
- Selecting *Regular BackupAssist Computer* will display a *Site Controller Registration* button.

Step 6 will be different for a *Regular BackupAssist Computer* and a *Site Controller*. The following sections describe the next *Remote Setup* steps, based on the Computer Role selected.

## For a Site Controller

6. Select **Use HTTPS** if you want to use secure SSL communication within the Site Controller's site. You will also need to select *Use HTTPS* when you add each BackupAssist computer to the Site Controller.

If you select *Use HTTPS*, the **Select Certificate** button will become active. The button will display the SSL certificates available. To learn more, please view our online [SSL certificates resource page](#).

7. Select the **MultiSite Manager Registration** button to open the **MultiSite Manager Registration** window. This window can be used to add and remove the Site Controller from a MultiSite Manager.
8. Select **Register with MultiSite Manager**.
9. Fill in the **Add to MultiSite Manager** fields.

- a) Enter either the MultiSite Manager's *Hostname* or *IP* address.
- b) *Use HTTPS* should be ticked if HTTPS was selected during the [MultiSite Manager setup](#) to secure communication between the MultiSite Manager and each Site.
- c) *Site Name* is used to enter a unique name for the site. The site name will be displayed in the MultiSite Manager UI.

10. Select OK to submit a registration request to the MultiSite Manager.
11. To approve this registration request, you will need to log into the **MultiSite Manager**.
  - a. From the MultiSite Manager UI, select **Pending Registrations** on the *All Sites* page.
  - b. Select the Site Controller and click the **Approve** tick.

## For a Regular BackupAssist computer

6. Select the **Site Controller Registration** button to open the **Site Controller Registration** window. The window is used to add (or remove) a BackupAssist Computer to a Site Controller.
7. Select **Add to Site Controller** and fill in the fields.

- a) Enter either the Site Controller's *Hostname* or *IP* address.
- b) *Use HTTPS* must be selected if the Site Controller has enabled HTTPS to secure communication within the site.
- c) Use the *Comment* field to enter a unique description. The description will be displayed in the MultiSite Manager UI.

8. Select OK.

## 8. The MultiSite Manager UI

### Opening MultiSite Manager

MultiSite Manager's Web UI is opened in a web browser. The Web UI can be launched from the Start menu of the computer running MultiSite Manager or from a remote computer using the web UI's URL. This URL is HTTP (or HTTPS) ://< the MultiSite Controllers' globally routable IP address >: port/index.

The first screen in the UI is for access authentication, using the MultiSite Manager's username and password. Once you are authenticated, the full UI will be displayed as shown in the screenshot below.

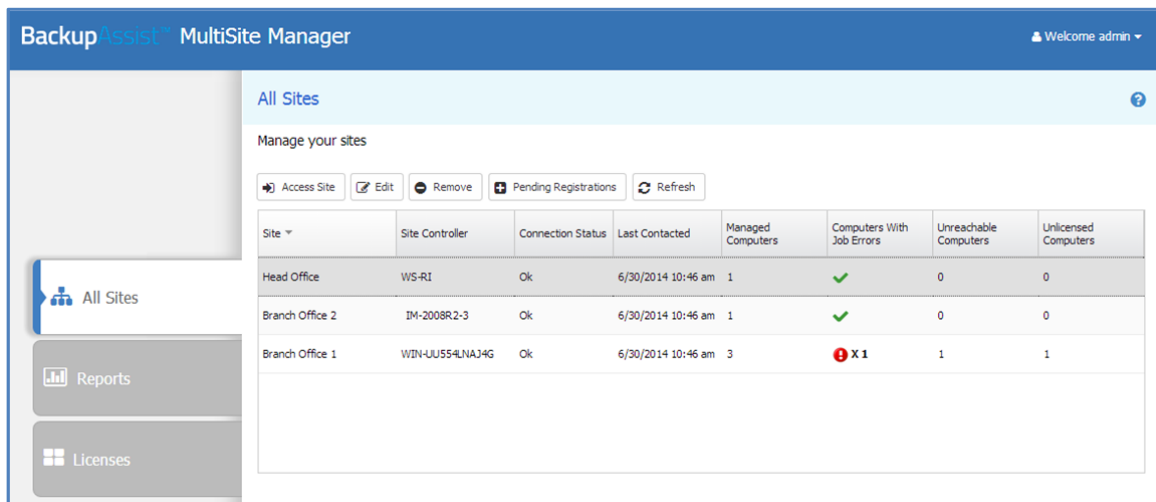


Figure 6: MultiSite Manager - implemented UI

### Navigating MultiSite Manager

MultiSite Manager has three tabs down the side. The top tab will display either **All Sites** or **Manage Site**. The names and contents of tabs 2 and 3 will depend on what top tab is selected - as shown below.

Tab	Tab name	Displays	Specific Features
1	<b>All Sites</b>	All managed sites	<ul style="list-style-type: none"> <li>Access / Edit site</li> <li>Approve/ Reject Site Registrations</li> </ul>
2	<b>Reports</b>	MultiSite Manager reports and report configurations	<ul style="list-style-type: none"> <li>Global email report</li> <li>Alerts</li> <li>Jobs status (all /last 24hrs)</li> </ul>
3	<b>Licenses</b>	Licenses of all BackupAssist installations on all sites	<ul style="list-style-type: none"> <li>Info only</li> </ul>

Tab	Tab name	Displays	Specific Features
1	<b>Manage Site</b>	<b>Computers screen</b> - displayed by accessing the site	<ul style="list-style-type: none"> <li>Remote update</li> <li>Remote Session</li> <li>Add computers</li> </ul>
		<b>Backup jobs screen</b> -displayed by accessing a computer	<ul style="list-style-type: none"> <li>Backup job management</li> <li>System Info</li> <li>Technical Support</li> </ul>
2	<b>Site Alerts</b>	All Alerts for the site	<ul style="list-style-type: none"> <li>Site email reports</li> </ul>
3	<b>Site Licenses</b>	All BackupAssist licenses in the site	<ul style="list-style-type: none"> <li>Activate, buy and renew</li> </ul>