

Disaster Recovery Process

The following guide explains how to use a BackupAssist Bare Metal image to restore an operating system and all data to a previous date. An image backup may be used to recover a machine to dissimilar hardware in the event of a system failure.

Note: This document assumes your backups are located on an externally connected USB hard drive.

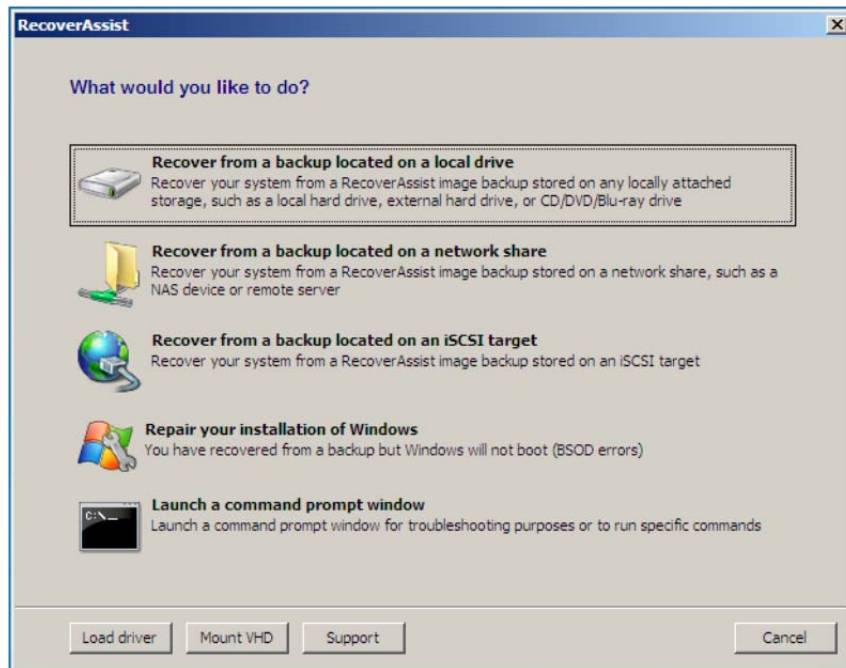
1. Insert the bootable media (RecoverAssist CD or Windows Installation CD) and attach the external hard drive containing the Bare Metal Backups.
2. Start the computer and boot from the optical drive.

Your computer should detect the recovery media and begin the boot process. If not, you will need to enter the BIOS/UEFI to adjust the boot order to ensure the optical drive is the first boot device selected.

RecoverAssist Environment Menu

Once your computer has booted from your RecoverAssist media, the recovery environment will load and present you with the following menu.

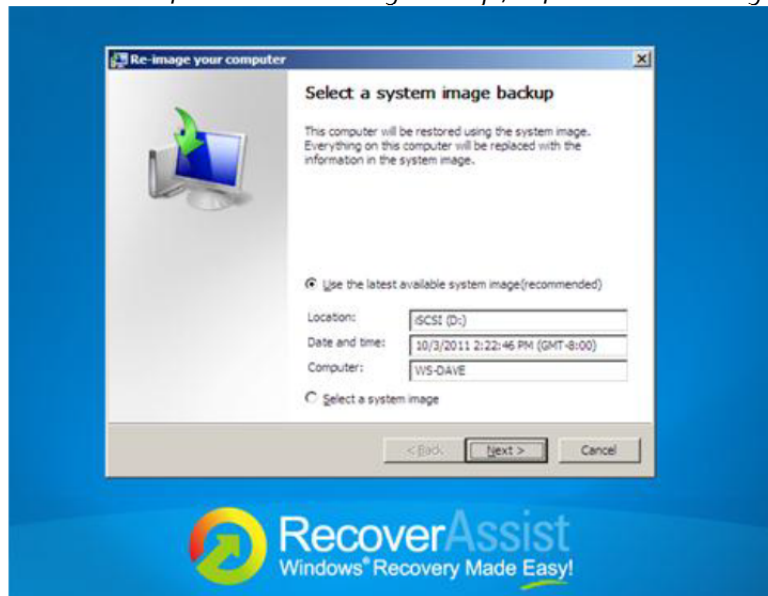
1. Click 'Recover from a backup on a local drive'



Recovering the Image Backup

If multiple backups are found, you will be given a chance to choose which backup to use for the recovery. Once the image backup has been located, select '**Next**' to recover your system.

Note: If you've renamed the directory containing your backup data you may need to revert the folder name back to the default 'WindowsImageBackup', before it will be recognized.



When the process completes the machine will reboot and load into the Windows operating system, with all settings and data intact.